

## Your feedback is helping shape the Ryde Hospital Redevelopment

It has been a productive and valuable year for the Ryde Hospital Redevelopment, with multiple milestones achieved. Thank you to the staff and the community for your time and feedback during 2022, your input is helping to shape the Ryde Hospital Redevelopment.

There has been a series of engagement activities held to inform the design of the redevelopment, including a mix of face-to-face briefings and online discussions with local residents and consumers, hospital staff, key health stakeholders, community members, local community groups and a range of government agencies including City of Ryde Council and Transport for NSW.

A range of key themes have been raised with the redevelopment team including the provision of services, the connection with the Blue Gum High Forest, links with public transport, staffing and the provision of green space and landscaping.

Part of the feedback included questions about the provision of car parking at the hospital and the proposed multi storey car park (MSCP). Following the latest round of consultation with staff, the community and key agencies, changes are being made to the plans for car parking.

The redevelopment team, together with the Northern Sydney Local Health District and Ryde Hospital, have listened to the feedback and are working through a revised proposal that meet the needs of surrounding residents while providing enough car parking spaces for staff, visitors and the community.

The community will have a chance to review the updated plans and have a say in early 2023 when the application goes on exhibition via the Department of Planning and Environment (DPE). Once published by DPE, you can view the plans [here](#).



## Recent community consultation

A series of engagement activities have been held to inform the designs for the redevelopment, including a mix of face-to-face engagement, presentations, surveys and online sessions with key stakeholders, community members and hospital staff.

A series of pop-up sessions at Ryde Hospital and several local shopping centres provided an opportunity for the team to talk to staff and the community about the latest designs and what they would like to see as part of the redevelopment. The eight sessions in September 2022 were visited by approximately 120 community and staff members and showed the high level of interest in the redevelopment. The sessions also allowed the team to answer questions from staff and community members.



*Members of the redevelopment team at a Ryde Hospital pop-up stand.*

[Click here](#) to view a full consultation summary, including responses to key questions from the community.

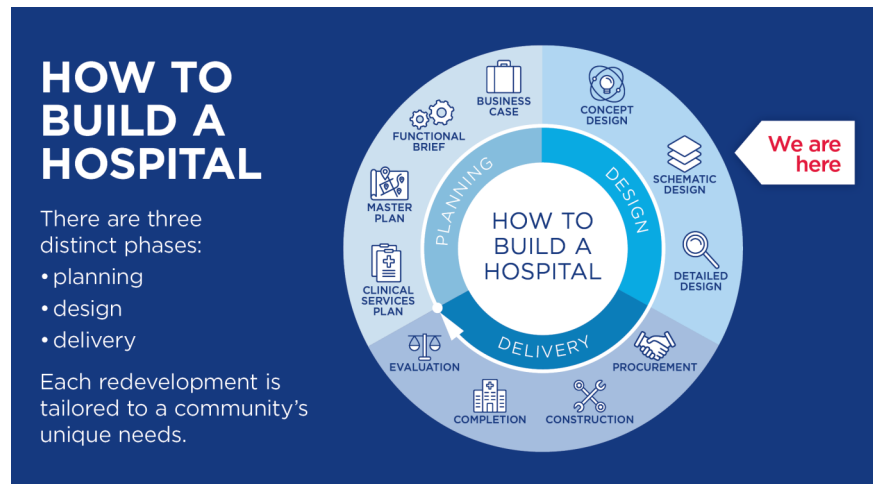


*The Ryde Hospital Redevelopment visited Eastwood Shopping Centre and held a stand at the Granny Smith Festival in October, where feedback showed an overwhelming level of support for the project.*

## What's next?

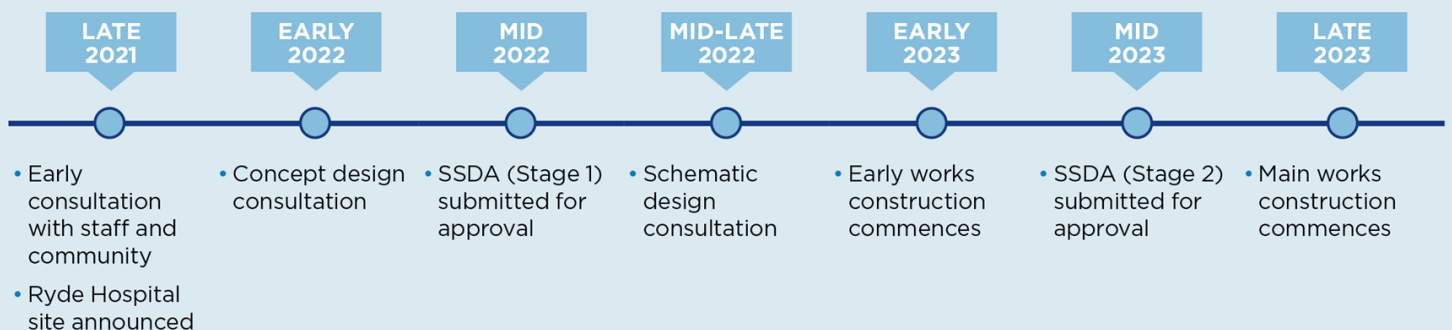
In the coming months we will see the commencement of early works at the hospital campus. These works will prepare the site for main construction works which, pending planning approvals, are expected to commence in late 2023.

The initial components of the early works will include internal refurbishment works of Graythwaite Rehabilitation Centre and the relocation of some services to enable the demolition of CAREs, Chattery and Cleaners Building to enable Stage 1 construction.



We thank the staff and the community for your time and effort in providing feedback last year. Your input is helping to shape the Ryde Hospital Redevelopment. We hope everyone had an enjoyable summer break and look forward to keeping you updated throughout 2023.

### Key Milestones



*Timeframes are indicative and subject to change as the project progresses. State Significant Development Application (SSDA).*